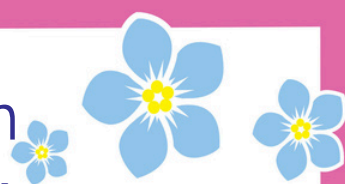


Department Information

Temporary Teacher of Geography



Geography at The Belvedere Academy

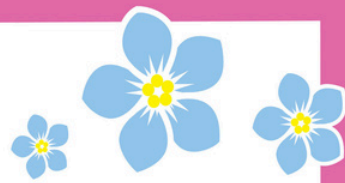
We wish to appoint an enthusiastic, qualified teacher of Geography to join an experienced and committed Geography Department and team.

OBJECTIVES OF THE HUMANITIES CURRICULUM AREA

The Humanities Curriculum Area at Belvedere believes that the study of Humanities can broaden a pupil's understanding of their environment at a local, national, international and global level. The study of Humanities based subjects can also provide the individual with a valuable framework from which to enhance their own moral spiritual and cultural development and appreciate diversity.

Teaching staff seek to pursue a number of objectives: -

- Develop reasoned arguments and reflect on pupils' experiences
- Ask why, and to use their imagination, to empathise and to listen to themselves and others reflectively
- Evaluate ethical issues, and express views using reasoned argument to resolve issues
- Identify questions to answer and identify problems to resolve
- Appreciate the consequences of decisions
- Plan and prepare research
- Carry out independent enquiry through investigation
- Explore events, issues or problems from different perspectives
- Consider the influence or circumstances, beliefs and feelings on decisions and events
- Analyse and evaluate information and judge its relevance and value
- Support conclusions, using reasoned arguments and evidence



Curriculum Intent for Geography

The Geography Curriculum is centred around powerful geographic knowledge. We ask ourselves:

- Does it provide pupils with new ways of thinking?
- Can pupils better understand and explain the world?
- Can pupils better contribute to conversations and debates?

Therefore, our curriculum encourages our pupils to become responsible global citizens who critically question, analyse and evaluate the changing world around them. Physical Geography provides the foundation for this learning and students have a strong base of substantive knowledge covering physical and human processes, landforms and the places they dominate. We then seek to facilitate understanding of human impact on the natural world and gain a deeper insight of the interaction between the two. Analysis and critical thinking are underpinned by key concepts such as scale and sustainability.

Disciplinary knowledge and fieldwork is a key thread throughout the curriculum and we are passionate about providing regular fieldwork opportunities across all key stages so students collect their own primary data, present this using innovative techniques such as GIS and are then able to analyse, conclude and evaluate their work independently.

Key Stage 3 - Years 7, 8 and 9

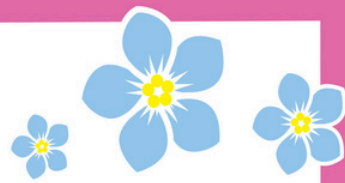
Lower School classes receive two hours of teaching over a two-week timetable in Year 7 and 8, with three hours in Year 9, and the broad outline of National Curriculum Geography is followed.

Year 7

- What is a Geographer?
- Why are rivers and the coastline important?
- Is the Geography of Russia helpful?

Year 8

- How is our planet physically different?
- How does climate change impact our planet?
- Diverse and Dynamic Asia - Disease & Development



Year 9

- What is the future of our planet?
- Natural Hazards: Tectonics & Climate
- Why do people migrate in Africa?

GCSE - Key Stage 4, Years 10 and 11

The department offers the OCR B Geography Specification: Geography for Enquiring Minds which includes Our Natural World, People and Society and Geographical Exploration.

Fieldwork opportunities take place over 2 days in a physical and human setting.

Examination performance at GCSE has been consistently strong as illustrated below with the average from 2023-2025:

%9-7	%9-5	%9-4
55	78	86.7

There are typically 2 GCSE groups each year with 5 teaching hours per fortnight.

Sixth Form - Key Stage 5 - Years 12 and 13

Similarly, Geography A Level has a consistent history of strong examination performance as illustrated below with the average from 2023-2025:

%A*-A	%A*-B	%A*-C
50	74	88

The department offers the OCR A Level Specification which includes Physical Systems (Landscape: Coasts, Earth's Life Support Systems), Human Interactions (Changing Spaces; Making Places, Connections:Migration, Human Rights) and Geographical Debates (Disease Dilemmas, Hazardous Earth)



In addition, students submit a NEA on a Geographical topic of their choice which is 4000 words and accounts for 20% of their overall grade. To support this, fieldwork opportunities take place over 4 days in both physical and human settings.

There is typically 1 A Level group each year with 10 teaching hours per fortnight.

Staffing

There are currently three teachers of Geography, one of whom is the Vice Principal. There is a strong emphasis on team work and the sharing of materials and good practice. Departmental meetings are held regularly to disseminate information, monitor individual progress and share CPD findings.

Geography staff also contribute to the HSPS Curriculum area, who meet each half term and undertake interdepartmental observations, and contribute to the profile of Humanities across the academy.

Geography and the HSPS as a whole embraces new technology where it enhances teaching and learning. We use a range of systems in our teaching such as Class Charts, the Google Suite, and other subject specific technologies such as GIS and DigiMaps. Educational AI tools such as Brisk Boost are used to enhance student progress, so we welcome candidates who have an interest in ICT and AI developments.

Visits

The Geography Department undertakes local fieldwork at KS3.

KS4 fieldwork has included visits to the River Alyn, Mold, New Brighton Coastline, Media City, Salford Quays and Liverpool City Centre.

KS5 fieldwork opportunities are tailored to students' NEA choice so there is a huge range including:

- coastal visits (Holderness, Wirral Peninsula, Blackpool, Sefton)
- forest visits (Delarmere, Storton, Formby, local parks)
- wetland visits (Martin Mere)
- rural studies (Lake District, Mold, Betws-y-Coed)
- urban studies (Liverpool, Manchester)

We also help facilitate a Curriculum Area trip to Martin Mere for Year 8.